

Business. Opportunity.





RUNNING
AT
THE
SPEED
OF
BUSINESS

IT'S NO
WONDER
IDAHO IS SUCH
AN ATTRACTIVE
PLACE TO DO
BUSINESS.



- **Top-Notch** Talent
- **Dynamic** Workforce
- **Strong** Economy
- **Low** Operating Costs
- **Predictable** Tax Structure
- Tax **Incentives**
- Property Tax **Exemptions**
- Workforce Training **Grants**
- Small, **Accessible** Government
- Business **Friendly** Environment
- **Solvent**, Fiscally-Responsible Government

Business.



BUSINESS TO NOTE

Nightforce Optics, located in Orofino, finds Idaho ideal for manufacturing and testing products.

Advantage.



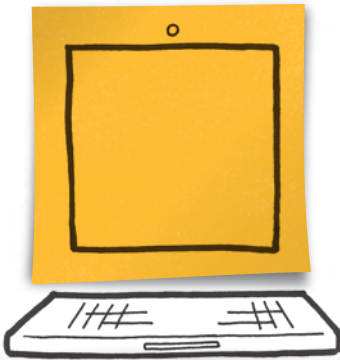
TAKE NOTE

Idaho has more than **37 million acres** of public land providing countless hunting opportunities.



BUSINESS ADVANTAGE

If your business invests at least \$500,000 in new facilities and creates 10 or more new jobs with salaries averaging \$40,000 a year with benefits, you may qualify for the Business Advantage incentive package which can include a variety of tax credits, sales tax rebates, and property tax exemptions.



3.75%

ENHANCED INVESTMENT TAX CREDIT

3.75% on all new, depreciable, tangible personal property placed in Idaho.



2.5%

REAL PROPERTY TAX CREDIT

2.5% on investments in new plants, buildings, and structural components placed in service in Idaho.



25%

SALES TAX REBATE

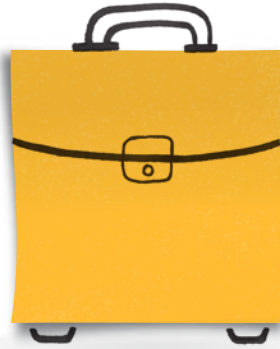
25% cash rebate for all sales taxes paid on construction materials for new facilities.



UP TO 100%

PROPERTY TAX EXEMPTION

A **full** or **partial** property tax incentive can be granted by the county commissioners where the project is located.



\$3,000

NEW JOB TAX CREDIT

Up to **\$3,000** for each new qualified job created.

TAX REIMBURSEMENT INCENTIVE



Up to **30%** reimbursement on state income, payroll, and sales taxes, for up to **15 years** on state revenues generated by companies seeking to expand in or relocate to the state of Idaho by adding new, qualifying jobs.



Business.



BUSINESS TO NOTE

K-Edge, located in Boise, was founded by entrepreneur Joe Savola and Olympic gold medalist Kristin Armstrong.

Incentives.



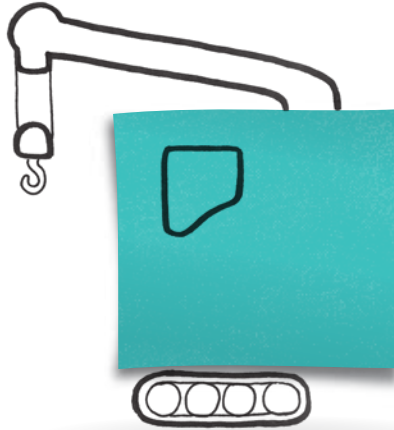
TAKE NOTE

Idaho is home to **thousands of miles** of trails and hosts the USA Cycling Mountain Bike National Championships.



GREAT BENEFITS FOR BUSINESSES

As you launch or expand your Idaho business, you've got a lot on your plate: hiring the right people, finding a suitable space, and creating demand for what you're offering. It all requires capital—and Idaho Commerce realizes you may need a little boost in this area. Whether you need start-up funding, financing for facility expansion, or a crash course in how to best leverage Idaho's tax incentives, we can help.



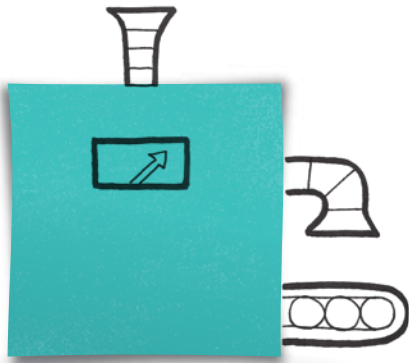
IDAHO OPPORTUNITY FUND

Does your job creation project need infrastructure improvements to a new or existing facility? Grants are awarded to support both existing and new businesses that create significant economic opportunities in communities throughout the state.



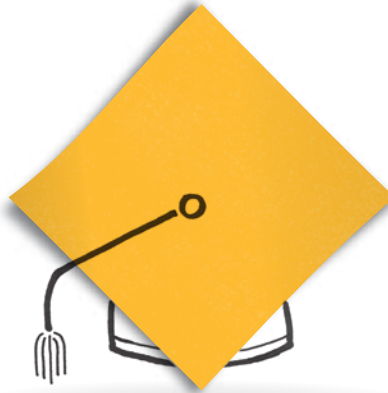
3% INVESTMENT TAX CREDIT

If your business makes qualifying new investments in personal property, you may earn a 3% income tax credit to offset up to 50% of your tax liability, and you can carry the credit forward up to 14 years.



PROPERTY TAX EXEMPTION

If your business invests \$3 million in a new manufacturing facility, you may receive a full or partial property tax exemption for up to five years.



WORKFORCE DEVELOPMENT TRAINING REIMBURSEMENTS

Businesses can receive up to \$3,000 in reimbursements per employee for training full-time, new employees, or to help retain employees facing permanent layoff.



INFRASTRUCTURE IMPROVEMENT GRANTS

Grants of up to \$350,000 are available through a variety of programs to help communities expand their infrastructure capacity to accommodate new or expanded commercial or industrial facilities.

Business.



BUSINESS TO NOTE

Kodiak, located in Burley, benefits from Idaho's **3rd lowest** business costs in the nation.

Ventures



TAKE NOTE

Idaho has **18 ski resorts** throughout the state including Sun Valley Resort, home to the world's first chairlift.



IDAHO BUSINESS OF NOTE

Premier Technology

Premier Technology, Inc. is one of the leading custom manufacturers in the nation. With the ability to create design-to-delivery projects, Premier Technology's customers receive a higher quality product because of innovative ideas and solutions. Approximately 250 highly skilled employees serve industries such as food processing, commercial nuclear, pharmaceuticals, and mining.

- 2011 Revenue \$57 Million
- Employees 255
- Year Founded 1996
- Location Blackfoot, Idaho
- Industry Engineering, Design, and Manufacturing

IDAHO TECH FACTS

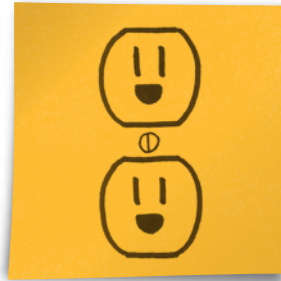
- Nearly **50,000** people work in the innovation industry
- The # of high-tech companies grew **61%** over the past decade.



ADDITIONAL INCENTIVES

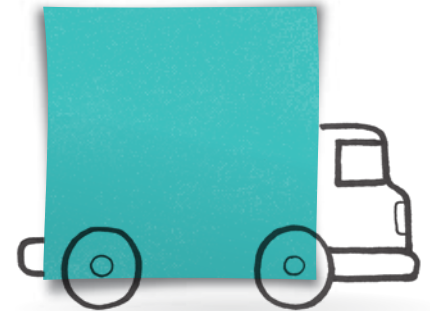
In addition to our incentive programs, here are a few more **tax benefits** Idaho offers:

- Personal Property Tax Exemption on \$100,000 Worth of Business Equipment
- Tax Increment Financing
- 5% Research and Development Income Tax Credit
- 3% Broadband Income Tax Credit
- Qualified Investment Property Tax Exemption
- Industrial Revenue Bonding
- 100% Goods-in-Transit Tax Exemption
- Utilities Sales Tax Exemption



PRODUCTION SALES TAX EXEMPTION

All businesses are exempt from sales tax on production equipment, pollution control equipment, and raw materials.



PROPERTY TAX EXEMPTION

All business inventory, pollution control equipment, registered motor vehicles, vessels, and aircraft are exempt from property tax.

Business.



BUSINESS TO NOTE

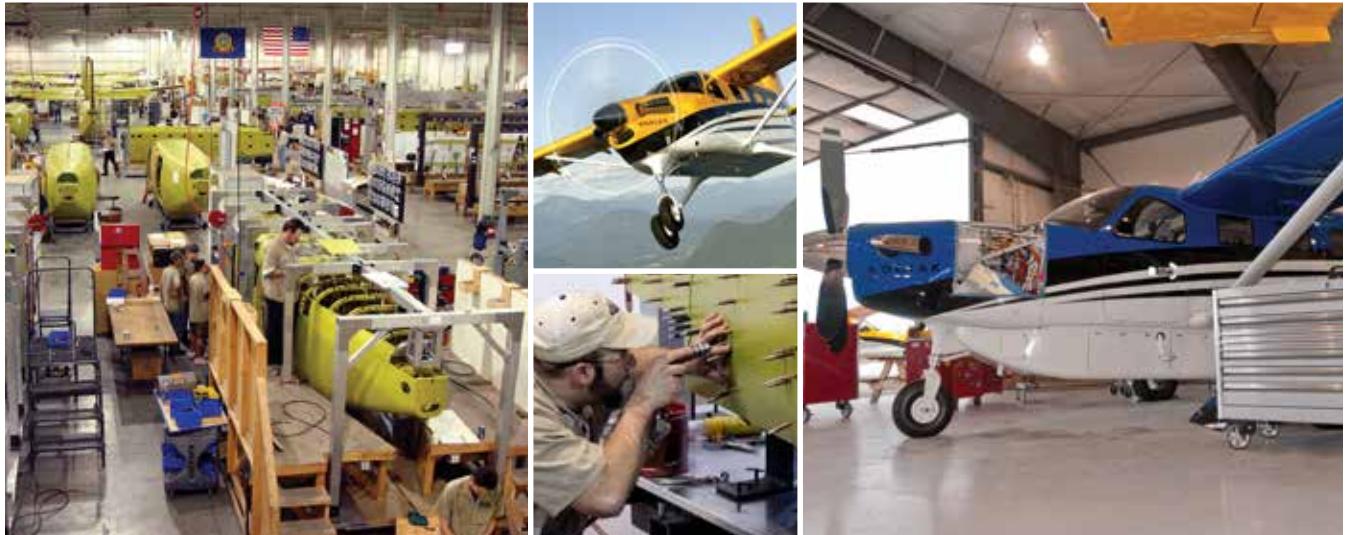
90% of Idaho's power comes from renewable sources including **Idaho Power's** hydroelectric generation.

Resources.



TAKE NOTE

With over **3,000 miles** of whitewater, Idaho has more rafting options than anywhere else in the lower 48 states.



IDAHO BUSINESS OF NOTE

Quest

Quest developed a new-generation aircraft to serve both humanitarian missions and backcountry commercial aviation. Raising funds required a joint effort between Quest and future plane purchasers which would subsidize aircraft delivered to participating, not-for-profit humanitarian organizations.

- 2011 Revenue \$24 Million
- Employees 168
- Year Founded 2001
- Location Sandpoint, Idaho
- Industry Aerospace manufacturing

IDAHO AEROSPACE FACTS

- Over **35** aerospace companies & growing
- **Vast airspace** & tech capabilities bring research, development, & testing of aviation products



RESOURCES FOR SUCCESS

We want your business to succeed. Here are a few of the assistance programs Idaho offers.



WORKFORCE ASSISTANCE

Along with our workforce training grants, Idaho maintains a complete network of customized training and recruiting services, with consultants ready to work with you at no charge to help identify and fulfill your staffing needs.



BUSINESS ASSISTANCE

Idaho offers many programs to complement our business incentives.

- Government Contracting Assistance
- Export Assistance
- Market Access Grants
- Lean Manufacturing & Product Development Assistance
- Small Business Innovative Research Grant Assistance
- Commercial Property Location Assistance

A scenic landscape featuring a golf course, a rocky stream, and mountains at sunset. The scene is bathed in the warm, golden light of the setting sun, with long shadows cast across the green grass. In the foreground, a small stream flows through a rocky bed, bordered by large, dark boulders. The middle ground shows a well-maintained golf course with a large, dark evergreen tree on the left. In the background, a range of mountains is visible under a soft, hazy sky. The word "Business." is overlaid in the center in a large, white, sans-serif font, with a small yellow square at the end of the period.

Business.

Friendly.



TAKE NOTE

The Idaho Golf Trail has **14 premiere** courses, as well as the world's only floating green located at Coeur d'Alene Resort.



IDAHO BUSINESS OF NOTE

Chobani

Maker of America's number one selling Greek Yogurt brand, Chobani was founded in 2005 on the belief that people have great taste, they just need great options. That is why Chobani produces only the highest quality authentic strained Greek yogurt products made with only natural ingredients. Following a \$450 million investment, Chobani's second United States facility opened in Twin Falls, Idaho in December 2012. At one million square feet, the plant is the world's largest yogurt manufacturing facility, currently employs over 1,000 skilled individuals, and is committed to sourcing milk from local farms.

- Employees +2,800 Globally, 80% of which is manufacturing-based
- Year Founded 2005
- Location Twin Falls, Idaho; South Edmeston, New York; Dandenong, Australia
- Industry Food Processing
- Idaho Plant Chobani built the world's largest yogurt plant in just 326 days

IDAHO FOOD & AGRIBUSINESS FACTS

- Generates over a billion dollars every year
- #1 producer of potatoes and trout



For a **personalized** and confidential review of how Idaho's Incentive and Business Assistance programs can help grow your business's bottom line, contact Idaho Commerce today.



800.842.5858 | [COMMERCE.IDAHO.GOV](https://commerce.idaho.gov) | [INFO@COMMERCE.IDAHO.GOV](mailto:info@commerce.idaho.gov)



800.842.5858 | commerce.idaho.gov